



# CHURCH OF THE ASCENSION

PARISH MISSION STATEMENT: WE JOYFULLY PROCLAIM,  
CELEBRATE, WITNESS, AND SERVE JESUS CHRIST

9510 W. 127TH ST. • OVERLAND PARK, KS 66213  
(913) 681-3348 • WWW.KCASCENSION.ORG • ASCENSIONCHURCH@KCASCENSION.ORG

## SUNDAY MASSES

*See Page 3 for Christmas Mass Schedule.*

*Saturday:* 4:30 p.m.

*Sunday:* 8:15 a.m., 10:00 a.m.,  
11:45 a.m., 5:00 p.m.

## WEEKDAY MASSES

*Monday-Friday:*

6:45 a.m., 12:00 noon

*Saturday:* 8:30 a.m.

## RECONCILIATION

*Tuesday:* 6:15 a.m., 11:30 a.m.

*Thursday:* 7:00 p.m.

*Saturday:* 3:30 p.m.

## ANOINTING

### OF THE SICK

*1st Thursday of the Month:*

6:30 p.m.

## ROSARY

*Sunday:* 9:30 a.m.

*Monday-Friday:* 6:20 a.m.

*Thursday:* 6:30 p.m.

*Saturday:* 8:00 a.m.

## BAPTISMS

Please contact the parish office  
or website for information and  
scheduling

## MARRIAGE

Couples should contact one of  
the parish priests at least six  
months prior to the wedding  
date

*Annulments:* Contact Fr. Tom or  
Fr. Regie

## OFFICE HOURS

*Monday-Friday:*

8:30 a.m. — 4:00 p.m.

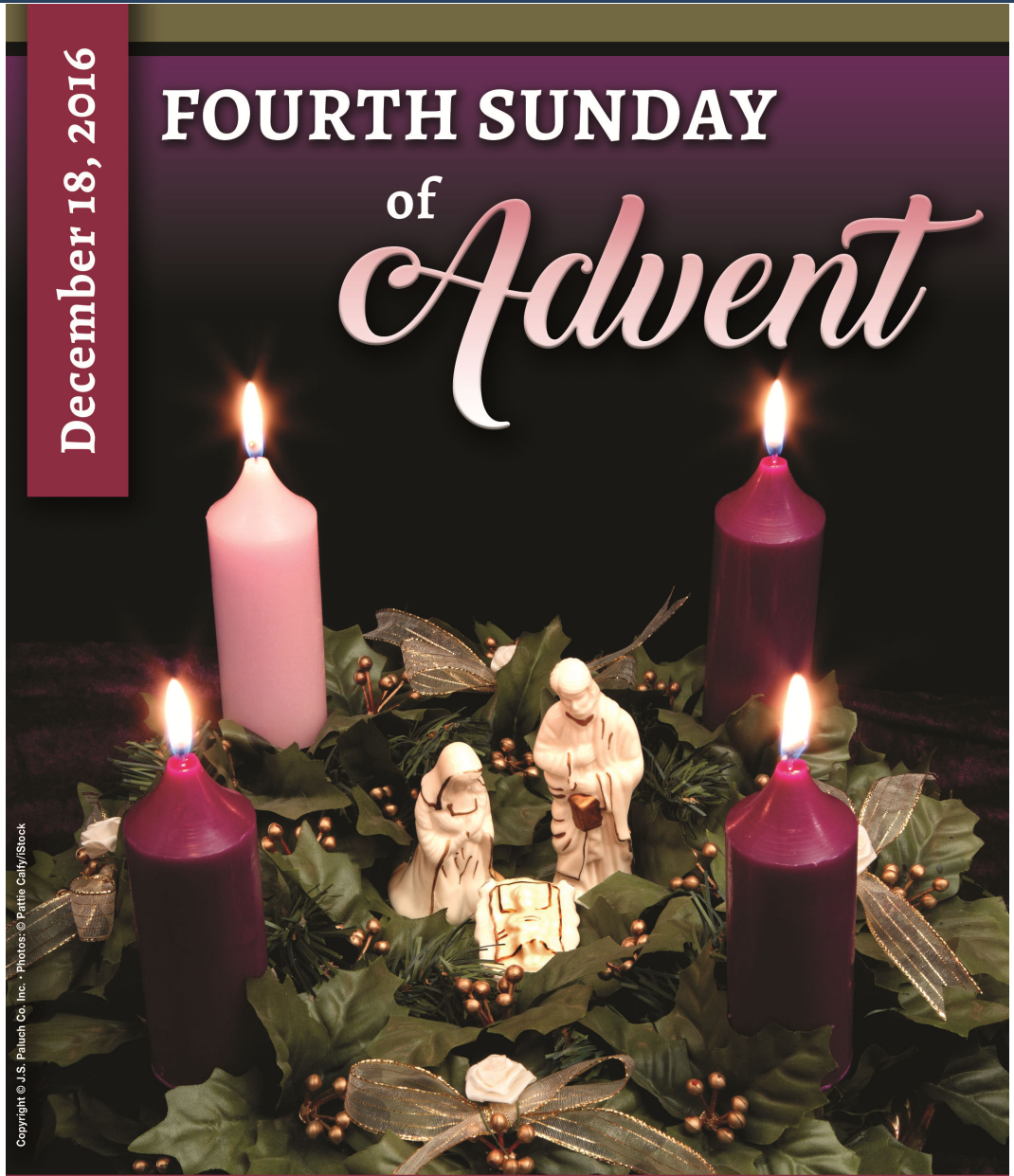
December 18, 2016

## FOURTH SUNDAY

of

# Advent

Copyright © J.S. Paluch Co. Inc. • Photos © Pattie Gally/Stock



Behold, the virgin shall conceive and bear a son,  
and they shall name him Emmanuel, which means "God is with us."

Matthew 1:23

## ASCENSION THIS WEEK

### CALENDAR OF EVENTS

**Sunday, December 18**

Donuts, Parish Hall, After 8:15AM and 10:00AM Masses  
 Sunday Scripture, Conf. Rm., 9:15AM  
 Kids for Christ, (K4C), 10:00AM  
 Baptisms, Church, 1:00PM  
 AA Mtg., St. John Rm., 1:00PM  
 Al Anon Mtg., St. John Rm., 4:00PM  
 S&L, Gym, 6:30PM  
 Year I-Youth Faith Formation, Parish Hall, 6:30PM  
 A Festival of Lessons and Carols, Church, 7:00PM

**Monday, December 19**

Legion of Mary, St. Luke Rm., 10:30AM  
 RCIA, St. Matthew Rm., 6:00PM  
 Men's Basketball Age 21+, Gym, 8:30PM

**Tuesday, December 20**

Ascension Catholic School Christmas Program, Church, 6:00PM

**Wednesday, December 21**

Fathers of St. Joseph, Church, 6:00AM  
 Fathers of St. Joseph, St. Matthew Rm., 6:30AM  
 Zoom-HS Youth, Youth Ctr., 6:00PM  
 Imagine Advent, St. Luke Rm., 7:00PM  
 AA Mtg., St. John Rm., 7:00PM

**Thursday, December 22**

No events scheduled.

**Friday, December 23**

Men of Ascension, St. Luke Rm., 6:00AM  
 Parish office closed.  
 Arts & Environment Set Up for Christmas, Church  
 7:30AM and 1:00PM

**Saturday, December 24, CHRISTMAS EVE DAY**

No events scheduled.

**Sunday, December 25, CHRISTMAS DAY**

AA Mtg., St. John Rm., 1:00PM  
 Al Anon Mtg., St. John Rm., 4:00PM

### WE APPRECIATE YOUR CONTRIBUTIONS

Thank you for all of your continued contributions to Church of the Ascension. All 2016 contributions must be received in the offertory collection or parish office by January 5. Any checks with a 2016 date received after January 5 will be recorded as 2017 contributions.

### STEWARDSHIP

*“When Joseph awoke, he did as the angel of the Lord had commanded him and took his wife into his home.”  
 Matthew 1:24*

Putting our complete trust in the Lord without expecting anything in return. Striving to put God first in all things and follow Him wherever He may lead us. As we prepare for the birth of our Lord, pray for the strength and courage to be a model of discipleship, just as Joseph was.

#### Financial Update

Weekly Offertory: December 11	\$ 63,159.14
Monthly Autodebit: November 662 Families on Autodebit	\$189,776.17
Fiscal YTD: November, 2016	\$2,341,929.57
Registered Families	3,100

### RECONCILIATION SERVICES

Sunday, Dec. 18  
 Queen of the Holy Rosary-Wea 3:00PM  
 St. Ann-3:00PM  
 Nativity-7:30PM

#### ASCENSION

Monday, Dec. 19  
 11:30AM-11:55AM

Tuesday, Dec. 20  
 6:15AM-6:40AM, 11:30AM-11:55AM

Wednesday, Dec. 21  
 11:30AM-11:55AM, 4:30PM-5:30PM  
 7:00PM-8:00PM

Thursday, Dec. 22  
 11:30AM-11:55AM



**CHRISTMAS EVE MASS INFORMATION**

Historically, the 4:00pm Christmas Eve Mass has been very heavily attended and seating has been limited. We strongly encourage you to attend a later Mass in order to have ample seating for your family and to be able to enjoy the Liturgy to the fullest.

To ensure everyone's enjoyment of the Christmas liturgies please:

Arrive 20 minutes early before Mass, and even earlier for the 4:00pm Mass.

Do not save seats - your whole family should arrive at the same time.

Ten minutes before Mass the ushers are instructed to seat people in any available pews. Please let the ushers know if you or others need special assistance because of physical disabilities.

Reach out to welcome visitors to the parish.

Finally, enjoy the beautiful Liturgy and let Christ's love shine this CHRISTmas!

**NURSERY CLOSED Christmas Masses**

The nursery will not be available on Christmas Eve or Christmas Day.

**MERRY CHRISTMAS**

As we celebrate the birth of our Savior this Christmas, we join in wishing you a very Blessed Christmas. As Mary and Joseph journeyed in faith to Bethlehem, may the presence of Christ our Savior strengthen you in your own journey of peace and joy. Blessed Christmas!

Father Tom, Father Alessandro, Father Regie and the parish office staff.



The parish office will be closed December 23-27 and January 2.

**PARKING Christmas Masses**

Please do not park in fire lanes as you may be ticketed.

## *ASCENSION THIS WEEK (Continued)*

**A FESTIVAL OF LESSONS AND CAROLS**

**December 18, 7:00 P.M. in Church**

**Presented by the Ascension Lector and Music Ministries, featuring:  
The Adult Choir and the Joyful Voices Youth Choir**

**This Fourth Sunday in Advent Service is a celebration with Scripture, Readings, and Song**

*Come, O Come, Ascension Families!*  
*Come, O Come, Emmanuel!!*



### **ZOOM HIGH SCHOOL YOUTH** **December 21, 6:00PM** **Youth Ctr.**

Zoom (high school youth group) is Wednesday, December 21. Come celebrate Advent with a big Ugly Christmas Sweater White Elephant Party! Join us from 6:00pm-8:00pm. Bring a friend and a goofy present for the gift exchange. Contact Chelsea/Joe for more information at [findithere@gmail.com](mailto:findithere@gmail.com) or 913-681-7683.

### **“IMAGINE ADVENT”** **December 21, 7:00PM** **AND “IMAGINE CHRISTMAS”** **December 28, 7:00PM** **St. Luke Rm.**



Join us Wednesday, December 21, in the St. Luke room from 7:00pm-8:00pm for an opportunity to ponder the Sunday Mass Gospel reading and share with others in a small faith group. Facilitated by Marguerite Enlow and Susan Friedrichsen. In order to have enough handouts, please register by email to: [dgreene@kcascension.org](mailto:dgreene@kcascension.org). You can list “advent” in the subject line.

Imagine the Nativity gospel meets on December 28. For questions call Liz Willman, Director of Adult Faith, at 913-681-3348 ext. 139.

### **ARTS & ENVIRONMENT VOLUNTEERS** **NEEDED FOR CHRISTMAS SET UP** **December 23, 7:30AM and 1:00PM** **Church**

Ever wonder how the church looks so beautiful at the changing of the liturgical seasons? Come help us set up for Christmas on December 23.

### **CHRISTMAS COLLECTION** **FOR CATHOLIC CHARITIES** **December 24-25**

Each year at Christmas we are all invited to financially support the corporal works of mercy through the services of our archdiocesan Catholic Charities. Your generosity helped make the following things happen this past year:

- Kansas Loan Pool Project converted more than 150 payday or title loans to 6% interest loans.
- Distributed nearly \$9.5 million worth of donated food and goods to families in need.
- Resettled 329 refugees.
- 108 people participated in Family Financial Transformation™ Program.
- 10,624 meals were served during the Kids Summer Food Program.
- Provided housing assistance 3,716 times and utility assistance 8,627 times.

Thanks for being generous to the Catholic Charities collection to help even better things happen this coming year. Please use your Catholic Charities envelopes, and put in the regular offertory collection. If you are on autodebit and do not receive envelopes, extra Catholic Charities envelopes will be available in the gathering area.

MARDI GRAS

Attention All Parishioners!

Going Christmas Shopping...add Mardi Gras to your list!

Mardi Gras Donations Are Wanted!

Looking for

Tickets to Sporting Events \* Airline and Hotel Points or Vouchers
Concert Tickets \* Vacation Destination Accommodations

And Silent Auction Items for

Sports & Leisure \* Home & Garden \* Religious Items
His & Her Pamper Yourself Items \* Children's Items

Donations can be dropped off at the Parish Office before December 31.

Your donations are greatly appreciated for Mardi Gras 2017!

Questions? Contact Dawnlee Maurer at 681-3348 or via email at dmaurer@kcascension.org

\*\*\*\*Looking for that Special Christmas Present for that Special Person?

Check out the Mardi Gras page on our website at kcascension.org for BUY NOW Items!\*\*\*\*



Mardi Gras
Saturday, February 25 2017
Table Sponsorships

Among the benefits you will enjoy:

- \*Table Extraordinaire for 10 Guests for Event:
\*Premiere Seating Location
\*Dedicated wait staff
\*Special Gift for each Guest at your Table
\*Advertisement in Event Catalog
\*A Listing on Sponsorship Page of Event Catalog
\*Recognition on the Big Screens during the Auction
\*Acknowledgement on the Website with Hyperlink
\*First-in-line Checkout Service!
\*Carryout Service for all your purchases!

For more information on how your business can support the parish
& be a corporate sponsor, please contact

Julie Stoll at 913-269-7124 or Julie@juliestoll.net



*MARDI GRAS (Continued)*

**Mardi Gras 2017 Raffle**

**Grand Prize**

**\$5,000**

*Seller of Winning Ticket Wins \$1,000*

**Drawing will be held February 25, 2017 during the Oral Auction!**  
*Tickets available at the Parish Office, at Parish Events and the evening of Mardi Gras.*

Suggested donation is \$50 per ticket or 3 tickets for \$100.  
 Need not be present to win.  
 No purchase necessary. Proceeds benefit Church of the Ascension.

**GENERAL INFORMATION**

**REMEMBER CHURCH OF THE ASCENSION IN YOUR PLANNED GIVING**



As we continue to celebrate 25 years as a parish, Church of the Ascension invites you to leave a lasting legacy to the parish. Planned Giving is a means to thoughtfully transfer resources to the next generation and helps the church gather the funds necessary for its mission and ministry. Examples of Planned Giving include: Last Will and Testament, Revocable Trust, Charitable Gift Annuities and Memorial Gifts. If you have questions or you need more information about including Church of the Ascension in your Planned Giving, please contact Dawnlee Maurer at [dmaurer@kcascension.org](mailto:dmaurer@kcascension.org) or call the church office at 913-681-3348.

**PERPETUAL ADORATION**  
**Join Jesus in our beautiful Chapel downstairs!**  
**The following Holy Hours need Help:**

- Sunday at noon
- Tuesday at 1:00am
- Wednesday at 9:00am
- Friday at 10:00pm\*\*\* and 11:00pm
- Saturday at 5:00pm, 7:00pm, 8:00pm\*\*\*, 9:00pm and 10:00pm

\*\*\*most urgently needed

Please contact Debbie Engel at [deborasuzanne@gmail.com](mailto:deborasuzanne@gmail.com) or 913-485-8918 for more information. If you can assist weekly at one of the these Holy Hours, please let me know.

Also, please go to our website [kcascension.org](http://kcascension.org) and go to "Quick Links/Current Volunteer Sign Ups," on the Home Page to substitute for an hour. There are lots of open hours over Christmas.

**UPCOMING EVENTS**

**WOMEN OF ASCENSION  
“Cookbook Library”  
Recipes Due by December 26**

Share your favorite appetizer recipes today by emailing to [m.keane@aol.com](mailto:m.keane@aol.com) or drop in the wooden WOA box in the vestibule of the church. Please include your name, a contact number and a little bit about your family or the origination of the recipe. Recipe submission deadline is Monday, December 26. Contact Madeline Keane at 913-634-6656 for any questions or assistance!



**INTERNATIONAL MISSIONS  
MEETING  
January 9, 7:30PM  
Conference Rm.**



We will not be meeting in December. We are gearing up for the “Annual Mission Trip” to Guatemala! We will be leaving on June 5, returning on June 12. We have work to do at San Lucas Mission! We are staying at San Lucas Mission for the work portion, then will travel high into the mountains to visit our sister parish and have Mass. Please mark your calendar for January 9 at 7:30pm in the conference room for a “find out about the trip” meeting. Please contact Jean in the office if you have questions or are interested in going [jhinman@kcascension.org](mailto:jhinman@kcascension.org).

**BABY BOTTLE BOOMERANG  
Pro-Life Month  
December 31-January 15  
Gathering Area**

The Baby Bottle Boomerang program is designed to raise needed funds for the Advice and Aid Pregnancy Clinic to operate its life-affirming services. The clinic provides services at no cost to women and families dealing with an unplanned pregnancy, especially those who have pressures to abort their child. Pick up a bottle the weekend of December 31 thru January 8. Donations or empty bottles need to be returned by the weekend of January 14-15 after all Masses. Please use this as an educational opportunity for your family to discuss, in your homes, how this helps women and helps save babies! Please contact Jean in the office with questions [jhinman@kcascension.org](mailto:jhinman@kcascension.org).



**ROE VS. WADE ROSE  
PROCESSION  
January 15, During 10:00AM  
And 5:00PM Masses  
Church**



January 22, 2017 will mark the 44th anniversary of Roe vs. Wade which made abortion legal and has since resulted in the deaths of over 50 million unborn children in our country alone. Each year the Respect Life Ministry organizes a procession during Masses in January. We are in need of a lot of young helpers to represent each year of life chosen since Roe vs. Wade. We especially need teens and adults. If you or any of your children are able to participate in one of the Masses, please go to our website [kcascension.org](http://kcascension.org) and click on “Quick Links/Current Volunteer Sign Ups,” on the Home Page to sign up.

**CULINARY EVENTS PREPARED AND  
SERVED BY THE KNIGHTS  
OF COLUMBUS!**

**BREAKFAST BUFFET  
January 8, 8:00AM-Noon  
Parish Hall**

**ITALIAN DINNER  
“Sunday Dinner at Our House”  
Mamma Mia! Thatsa Italian!  
January 15, 6:00PM-7:30PM  
Parish Hall**



**JUAN ANA COFFEE**

Direct Trade is a term used by coffee roasters who buy straight from the growers, thus cutting out the middle man. Buyers can work together with the growers to directly control the quality of the coffee, and in many cases, social and environmental issues that are related. Direct Trade is similar in many ways to Fair Trade, including that both ensure producers earn a fair price for their product, and are treated with respect and dignity. Most importantly, they are both about building and fostering relationships over the long term.

We know many families benefit from our daily cup of Juan Ana Coffee. We know that the farmers were paid a fair price for their coffee crop, and that only the highest quality coffee was produced and bought. We also know that by supporting Juan Ana Coffee we are keeping with the pillars of Catholic Social Teaching!

Juan Anna Coffee is available for purchase (\$10.00/lb.), anytime in the parish office. We use Juan Ana Coffee for parish meetings, classes, lunches and gatherings. Please contact Jean at [jhinman@kcascension.org](mailto:jhinman@kcascension.org) for questions.

*UPCOMING EVENTS (Continued)*



**ALL ARE WELCOME!**

**Women & Blessings**

A Women of Ascension Game Night  
and Mardi Gras Gift Gathering

**Thursday, January 12<sup>th</sup>, 2017**  
**6:30 PM, Wilshire Farms Clubhouse**  
**15600 Eby St., Overland Park**

**Blessing followed by Games**

**Consider "Inviting 3" NEW women!**

*Mardi Gras Donations are greatly encouraged!*

**\*\*Bring your own wine or beverage**  
**Snacks will be provided\*\***

RSVP To: [hbraudis@aol.com](mailto:hbraudis@aol.com) By January 1<sup>st</sup> **\*\*Space Is Limited**



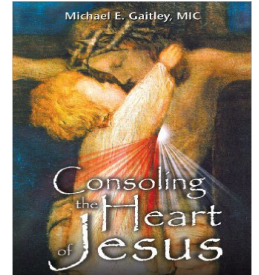
*UPCOMING EVENTS (Continued)*

# Adult Faith offerings. Sign up now!

## Consoling the Heart of Jesus

(a sequel to 33 Days to Morning Glory)

*This course combines the Spiritual Exercises of St. Ignatius with the teachings of Saints Thérèse of Lisieux, Faustina Kowalska, and Louis de Montfort. The author, Father Michael Gaitley, MIC, has a remarkable gift for inspiring little souls to trust in Jesus, The Divine Mercy.*



**10 Week Course**

**Tuesday 9:30-11:00AM or 7:00-8:30PM**

**Start Date: January 10, 2017, Location: St. Luke Rm., Facilitator: Dick Kane**

**Cost of Materials: \$5.00**

## 33 Days to Merciful Love



*Live the extraordinary "Jubilee Year of Mercy" to the full! Get your copy of 33 Days to Merciful Love, the stirring sequel to the international best-selling sensation, 33 Days to Morning Glory. Using the same 33-day preparation format, 33 Days to Merciful Love journeys with one of the most beloved saints of modern times, St. Therese of Lisieux, and concludes with a consecration to Divine Mercy.*

**6 Week Course**

**Tuesday 9:30-11:00AM or 7:00-8:30PM**

**Start Date: March 21, 2017, Location: St. Luke Rm.**

**Facilitator: Dick Kane**

**Cost of Materials: \$10.00**

-----

Name: \_\_\_\_\_ Spouse (if attending) \_\_\_\_\_

Phone: \_\_\_\_\_ Email: \_\_\_\_\_

Please circle choice and turn into parish office with payment for materials. Please note if you already have the materials. Registration due January 6 and March 10.

- Consoling the Heart of Jesus    AM or PM    Cost of materials \$5.00    (  already have book-no fee)
- 33 Days to Merciful Love        AM or PM    Cost of materials \$10.00    (  already have book-no fee)

**YEAR-END GIVING**

With the Advent season coming to a close and the Christmas Season upon us, it is a perfect time to give thanks for the many blessings received and to consider an additional gift to our parish community.

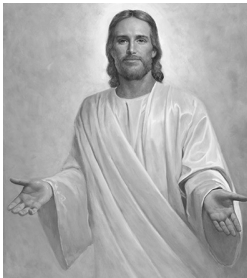


**Five Simple "Gift" and Year-End Tax Strategies:**

1. Gift of Appreciated Stock - The last few weeks have seen impressive gains in equity markets. Gifts of stocks, bonds and mutual funds can be made to our parish or any Catholic entity on a tax favored basis.
2. Donor Advised Fund (DAF) - Was this a particularly good year financially or did the sale of a business, or an inherited IRA bump you into a higher tax bracket? Consider starting a family giving account (DAF) at the Catholic Foundation of Northeast Kansas (CFNEK). Lock in your deduction this year and spread your giving to our parish and multiple charities for years to come. Using appreciated stock to fund your DAF can maximize tax savings. The minimum to start your family's new DAF is \$5,000.
3. Charitable Gift Annuity (CGA) - Increase your lifetime income while making a gift to our parish. A CGA through the CFNEK gives you and/or your spouse income for life, and your gift helps our parish today. Turn under-performing CDs, cash or low dividend stock into reliable, tax-favored, lifetime income.
4. Life Insurance - Do you have a paid up policy or a policy with a cash value that you no longer need. Consider giving unneeded policies to our parish to help build God's everlasting kingdom during your lifetime.
5. Year-end giving ideas - Jesus reminds us to "render unto Caesar what is Caesar's and to God what is God's" but there is no obligation to pay more taxes than required by law. Take advantage of tax strategies available to you to keep money in your pocket and to help the charitable causes you care about the most.

Contact Dawnlee Maurer in the parish office 913-681-3348 for more information on year-end giving as well as planned giving.

**WOMEN'S RETREAT**



*"What do you want me to do for you?"*

**Women's Retreat**

**Presenters:**

- \* **Fr. Alessandro**
- \* **Dr. Joyce Grashoff**
- \* **Mona Snider (Spiritual Director)**
- \* **Susan Friedrichsen (Spiritual Director)**

**Savior Pastoral Center**

**January 24, 9:00AM - Start time**

**January 25, 4:30PM - End time**

**Transportation to and from  
Savior Pastoral Center to be provided.**

**Registration Due January 6**

Contact Laverne ONeill [lavernetoneill@gmail.com](mailto:lavernetoneill@gmail.com) or Deloris Moore [nannyshouse@att.net](mailto:nannyshouse@att.net) with questions.

\$130 Double Occupancy  \$150 Single Room Includes meals, rooms and transportation

**NAME:** \_\_\_\_\_

**Email Address:** \_\_\_\_\_ **Phone:** \_\_\_\_\_

**MARRIAGE ENRICHMENT RETREAT (Sign up today!!!)**

# One Flesh

Church of the Ascension  
February 4, 2017  
9am-6:30pm  
Adult Faith - Parish Hall

*A One Day Marriage Enrichment Retreat  
for Married Couples  
With Fr. Alessandro*

**Highlights Include:**

- ◆ *God's Marriage Mission*
- ◆ *Communication & Prayer as a Couple*
- ◆ *Forgiveness & Reconciliation*
- ◆ *Private Mass Followed by a Candlelight Dinner*

**Cost: \$50/Couple**

**Includes Registration, Light Breakfast, Lunch, & Dinner**

*Contact Ray Martin with questions: [rmartin@kcascension.org](mailto:rmartin@kcascension.org)*

.....

*One Flesh* REGISTRATION - RSVP By January 15, 2017

Please return with cash or check payable to Church of the Ascension to Parish Office or Gathering Space Lock Box

NAMES: \_\_\_\_\_

Email Address(es): \_\_\_\_\_

Phone: \_\_\_\_\_

Comments/Special Dietary Accommodations: \_\_\_\_\_

\_\_\_\_\_

**WEEKLY PRAYER**

**Mass Intentions  
For The Week** 

**NOTE:** Please let us know when your loved one is better. Names are removed after six months. Contact Jean with questions or to return name to sick list [jhinman@kscascension.org](mailto:jhinman@kscascension.org).


<b>Monday</b> 6:45AM <b>11:30AM</b> 12:00PM	<b>December 19</b> +Sandra Brandt by Peggy & Phil Molz <b>Reconciliation</b> +Bill McCarty by Blaise Family
<b>Tuesday</b> <b>6:15AM</b> 6:45AM  <b>11:30AM</b> 12:00PM	<b>December 20</b> <b>Reconciliation</b> +John & Maggie Mackay by Bubbles & Jerry King <b>Reconciliation</b> +Virginia Glaser by Rena McCall
<b>Wednesday</b> 6:45AM 8:00AM <b>11:30AM</b> 12:00PM <b>4:30PM</b> <b>7:00PM</b>	<b>December 21</b> +Richard Pellant by Knights of the Holy Grill + Romulo Alajor <b>Reconciliation</b> +Ralph Wolfe by MAM <b>Reconciliation</b> <b>Reconciliation</b>
<b>Thursday</b> 6:45AM  <b>11:30AM</b> 12:00PM <b>6:30PM</b>	<b>December 22</b> +Clara Meiners King by Bubbles & Jerry King <b>Reconciliation</b> +Harry Beiermann <b>Weekly Rosary</b>
<b>Friday</b> 6:45AM 12:00PM	<b>December 23</b> +Bradley Gregson by Hinmans +Pat Bins by Family
<b>Saturday</b> 4:00PM 6:00PM 8:00PM 10:00PM	<b>December 24</b> Christmas Memorials Christmas Memorials Christmas Memorials Christmas Memorials
<b>Sunday</b> 9:00AM 11:00AM	<b>December 25</b> Christmas Memorials Christmas Memorials

**Please let us know when your loved one is better!**

**Parishioners:**  
Millie Astuto, Kathleen Baldwin, Janine Bensman, Millie Bock, Jamie Boos, Bill Borst, Heather Cardin, Vince Costello, Hunter Cussigh, Chelsea Dalbey, Mike Delaney, Bryan Dickerson, Toni Dillane, Bob and Mary Dinneen, Rick Doran, Joe Esposito, Vinnie Fasone, Jennifer Fontana, Doug Geck, Jack Gessler, George Gilbertson, Robert Gilworth, Roger Goodrich, Scott Graham, Mary Pat Harpenau, Virginia Hermes, Burry Hinman, Barb Hughes, David Long, Dale Marti, Jose Martinez, Jim McAuliffe, Lynne Minelli, Mary Nail, Jeff Palmer, Lisa Palmer, Carmen Porterfield, Kay Raab, Dolores Rodriguez, Zachary Scheier, Martha Schofield, Deidre Sechi, George Shore, Mary, Elisa Smith, Jill Smith, Ana Sosa de Alonzo, Patricia Spinler, Wanda Stepanich, Sheila Strecker, Carol Stump, Fr. Tom Tank, Hilde Virgilio, Collin Warrender, Dave Watson.

**Relatives & Friends of Parishioners:**  
Fr. Larry Albertson, Lyla Aldredge, Keith Anderson, Alex, Angee, Gaby Beckstrom, Colleen Barbour, Bob Bozek, Aaron Brotman, Gabriel Brown, Verona Brown, Gladice Budlong, Cameron Burroughs, Bob Butters, Brian Cavanaugh, Kayla Chranz, Jerry Christiansen, Herschel Clark, Linea Colwell, Paula Darling, Daphe, Vinnie DeCarlo, Ken Denesia, Rose DiTeresi, Mark Dowey, Aaron Erickson, Catherine Gasser, Betty Godar, Fred Godar, Erik Gregory, Emma Gibbar, Fr. Jim Giglotti, Delores Graves, Carol Ingram, Jean Hartnett, Debbie Hayes, Terrance Heeney, Jack, Joe, Michael Kauffman, Terry Kauffman, Father Tom Kearns, Greg Knutson, Jessica Korte, Ann Latora, Scott Leahy, John Lichiello, Rebecca Locke, Barbara Lockhart, Jack Maher, Todd Martin, Mohan, Mauricio Montalvo, Ella Moore, Nancy Newman, Pam Nolan, Tammi Nordmeyer, Darrell and Nola Odle, Kevin O’Grady, Geraldine Ortmeier, Glenda Palazzolo, Carol Reilly, Claudia Roche, Carl Roemmele, Cindy Romito, Lucca Sachse, Bert Scholz, Susan Spears, Kristen Spiecker, Joel Sydzyik, Michael Ward, Michael Wellinghoff, Eileen Williams, Justin Williams, Bob Wilson, David Wiltgen.

Unforeseen circumstances may require a change in the priest schedule.

 Prayer Partners Intention  
Voicemail Number  
1 -888-684-6555  
Thank you!

## WEEKLY PRAYER

### Fourth Sunday of Advent Emmanuel

On this last Sunday before Christmas, we see that Jesus' birth is the fulfillment of the promise of Emmanuel, "God is with us" (Matthew 1:23). The Gospel refers to the first reading from Isaiah. There we see the king of Judah, Ahaz, under attack by the kings of Aram and Israel. He wants to ask the Assyrians for help instead of relying on God. That's why he says, "I will not tempt the Lord" (Isaiah 7:12). He is afraid to admit his lack of faith. So the weakness of Ahaz gives us the wonderful prophecy of the birth of Jesus. Ahaz, of course, did not understand the full meaning of that prophecy. For him, the prophecy meant the destruction of Judah.

In the Gospel, Joseph also does not understand how Mary came to be pregnant. But unlike Ahaz, Joseph did have faith in God and the message of the angel. He took Mary as his wife and helped her through her pregnancy and in raising Jesus afterwards. His faith in God kept Jesus from being murdered by Herod after the magi's visit.

So now we have to choose whom to rely on. Do I act like Ahaz, relying on worldly powers, or like Joseph, who trusted the Lord? I would like to say that I trust in the Lord only. But if I look at my actions and priorities, I might be more like Ahaz than I want to admit.

How much time do I spend watching television (especially now that it's in HD) compared to time in prayer? How much time do I spend reading the scriptures compared to the newspaper or magazines? How much do I spend on Christmas decorations or gifts for my family, compared to what I give to the Church? If I really believe that "God is with us," which is what Christmas is all about, how much of God can people see in my actions?

Maybe if we kept in mind that promise that God is with us--in the baptism we received and the sacraments of the Church, and in the love of our spouse or parents--we could see how close God really is, and let others see in our actions that Jesus is Emmanuel.

**New Parishioners**

Mr. & Mrs. Kyle Bailey and Family  
Mr. Adam Davis  
Ms. Amanda Davidson  
Mr. & Mrs. Sean Doherty and Family

**Together for Life**


Lane Hegarty and Michael Besler  
Mona Oita Betch and Obinna Adaba  
Kelly Harrison and Andrew McKeegan

**Banns of Matrimony**

Becky Stretz and Marvin Kleeb  
Paige Brown and Allen Ford James

**From Death to New Life**

Mary Catherine McCarter, Mother of Don



**Please pray for our active duty service members:**

Lt. Jake Morin, USAF; LCDR TJ Dierks, USN; Larry Homan; 1st Lt Stephen Cuff, Army Airborne; Lt Corp Luke Talken, USMC., Lance Corporal Jonathan Scavuzzo, USMC.

Contact Jean in the office [jhinman@kcascension.org](mailto:jhinman@kcascension.org) to add your loved ones names to the active duty prayer list.

### December 19 - 25

- Monday: Jgs 13:2-7, 24-25a;  
Ps 71:3-4a, 5-6ab, 16-17; Lk 1:5-25
- Tuesday: Is 7:10-14; Ps 24:1-4ab, 5-6; Lk 1:26-38
- Wednesday: Sg 2:8-14 or Zep 3:14-18a;  
Ps 33:2-3, 11-12, 20-21; Lk 1:39-45
- Thursday: 1 Sm 1:24-28; 1 Sm 2:1, 4-8abcd; Lk 1:46-56
- Friday: Mal 3:1-4, 23-34; Ps 25:4-5ab, 8-10, 14;  
Lk 1:57-66
- Saturday: 2 Sm 7:1-5, 8b-12, 14a, 16; Ps 89:2-5, 27, 29;  
Lk 1:67-79
- Sunday: Vigil: Is 62:1-5; Ps 89:4-5, 16-17, 27 29;  
Acts 13:16-17, 22-25; Mt 1:1-25 [18-25]  
Night: Is 9:1-6; Ps 96:1-3, 11-13; Ti 2:11-14;  
Lk 2:1-14 Dawn: Is 62:11-12; Ps 97:1, 6, 11-12;  
Ti 3:4-7; Lk 2:15-20  
Day: Is 52:7-10; Ps 98:1-6; Heb 1:1-6;  
Jn 1:1-18 [1-5, 9-14]

## MINISTRY NEWS

### KNIGHTS OF COLUMBUS



The Knights of Columbus is a Catholic Men's Fraternal organization open to all Catholic men ages 18 and over. Interested in joining the Knights? The next First Degree initiation is Monday, December 19, at 6:30pm. Contact Bill Fredrickson at [billfred4949@yahoo.com](mailto:billfred4949@yahoo.com) or 913-909-4492 for more information.

Congratulations and welcome to our new Knights to Council 10932: Fr. Alessandro, Jeffrey Roith, Brian Gump, Timothy Roberts and Allen Shulfer!

Meeting reminder - the next Council meeting will be held on Monday, December 19, at 7:00pm in the parish hall. Rosary is at 6:30pm before the meeting in front of the Sanctity of Life statue, weather permitting, otherwise, the Rosary will be held inside the church.

The Knights will be serving a Breakfast Buffet Sunday, January 8, from 8:00am to noon in the parish hall. There is no cost however, donations will be accepted to help local charities supported by the Knights. Volunteers, please sign-up on the Knights' website [www.ascensionkofc.com](http://www.ascensionkofc.com) or contact Frank Colletti at [frankcolletti@att.net](mailto:frankcolletti@att.net) or call 913-406-2995.

Family Italian dinner will be on Sunday January 15, from 6:00pm to 7:30pm in the parish hall. Adults-12 & over-\$8.00, Children-5-11 (new lower price)-\$3.00, Children-4 and under-free. Cash, checks, credit and debit cards welcome. Net proceeds help support various Ascension and community charities.

Knight Choir - Contact Dan Tira at [tirad@umkc.edu](mailto:tirad@umkc.edu) or 913-451-2341 if you are interested in joining.

UPCOMING EVENTS (Sign up on our website [www.ascensionkofc.com](http://www.ascensionkofc.com) for activities).

- \* Knights Mass each Friday morning 6:45am.
- \* First Degree Ceremony in the Knights' Room, Monday, December 19, at 6:30pm.
- \* Knights Rosary at the Sanctity of Life Statue in front of the church weather permitting or else inside Monday, December 19, at 6:30pm.
- \* Council meeting Monday, December 19, at 7:00pm in the parish hall.
- \* Breakfast Buffet - Sunday, January 8, from 8:00am to 12:00pm in the parish hall. Sign-up on the Knights' website to volunteer.
- \* Officers' meeting Monday, January 9, at 6:30pm in the Knights' room.
- \* Italian Dinner Sunday, January 15, from 6:00pm to 7:30pm in the parish hall. Sign-up on the Knights' website to volunteer.

### MINISTRY OF CARE

Respect Life Corner  
December 18

A Gift to the Christ Child

During this most holy, blessed and special season, the Christ child calls us to remember and defend the weak, the vulnerable, the shunned. All too frequently the unborn, our weakest and most vulnerable, are discounted by society. For over 40 years, over one million innocents have been aborted in the United States each year. It is time for these unrelenting attacks to end. This Christmas season and in 2017 let us respond by following the suggestion of the late Archbishop Fulton J. Sheen who encouraged us to spiritually adopt an unknown unborn child. He suggested that we say the following prayer each day for a period of nine months:

"Jesus, Mary and Joseph, I love you very much. I beg you to spare the life of the unborn baby that I have spiritually adopted who is in danger of abortion."

This Christmas and in the New Year let us make a special gift of this daily prayer to the Christ child.

Written by Bill Roche

### MOTHERS OF YOUNG CHILDREN



Mothers of Young Children (MOYC) provides expectant moms through moms with second grade age children spiritual enrichment and fellowship. To join, or if you have any questions, please contact Meghan McEvoy at [meghan.j.mcevoy@gmail.com](mailto:meghan.j.mcevoy@gmail.com) or 913-475-1026.

The email list for sending event information was updated based on submitted enrollment forms. If you are not receiving weekly emails or want to enroll, contact Meghan.

Upcoming Activities:

January 5 - Monthly general meeting at 7:00pm in the parish hall.

### YOUTH FAITH FORMATION

December 18

K4C, Year I and Year II will meet today.

Youth Faith Formation Holiday Schedule

No K4C, Year I or Year II (S&L) on December 25 or January 1.

No Traditional Youth Faith Formation on Wednesday December 21 or 28.

The Youth Faith Formation Office will be closed the week of December 26-29.

*MINISTRY NEWS (Continued) - SCHOOL*



**Ascension Catholic School is a Great Choice!**

**To Educate, Celebrate, and Serve in the Spirit of Christ**

We will provide a curriculum that fosters Catholic values and faith development. This innovative curriculum will respect the student's individual differences, nurture the whole child, and prepare the students to meet the challenges of the 21st century.

**2017-2018 Enrollment Happening Soon!**

**New Family Meeting**  
 January 29, 1:00 PM  
 In School's Library




Presentation  
 Tours  
 Packets of Information

Please call the school office for more Information.  
 913-851-2531



FAITH  
ACADEMICS  
COMMUNITY



**COMMUNITY NEWS**

**ONE THING REMAINS**  
**December 30, Starting at 3:00PM**  
**Blessed Sacrament Church**  
**2203 Parallel Ave., Kansas City, KS.**

Come join us and bring your family for a faith filled afternoon with Tony Melendez and his family! Talk, prayer, music free for all families in the Blessed Sacrament school gym starting at 3:00pm, nacho bar at 5:30pm. Then come join us from 7:00pm-8:30pm for Adoration, Benediction and Reconciliation with Archbishop Naumann in the church.

**CHAP CLARK, SPEAKING ON HURT 2.0**  
**January 18, 7:00PM**  
**St. James Academy**  
**Lenexa, KS. OR**  
**January 19, 9:30AM**  
**Savior Pastoral Center**  
**Kansas City, KS.**

Chap Clark is author of Hurt 2.0. He provides a vivid and insightful view into the world of today's teenagers. Now leading youth ministry expert Chap Clark substantially updates and revises his groundbreaking bestseller (over 55,000 copies sold). Hurt 2.0 features a new chapter on youth at society's margins and new material on social networking and gaming. Each chapter has been thoroughly revised with new research, statistics, quotations, and documentation.

**CATHOLIC EDUCATION FOUNDATION**  
**ART EVENT**  
**February 23, 6:30PM**  
**Boulevard Brewery, Kansas City, MO.**

Join the CEF Futures for appetizers, dessert from Cakes by Aggie, boulevard drinks, live entertainment, a photo booth and an art exhibit featuring submissions from local professional artists and aspiring artists from CEF schools. Art will be available for purchase, and all proceeds benefit the CEF Futures Guardian Angel Scholarship Program. Tickets are \$45.00. This event will sell out soon (only 130 tickets remain)! Register today! Sponsorships are available as well. Thank you to our event sponsors and art donors!

**BOOK A MARRIAGE ENRICHMENT**  
**TODAY!**

Give the gift of a more joyful marriage! Book a marriage enrichment for your spouse or a married couple that you love. Go to [www.joyfulmarriageproject.com](http://www.joyfulmarriageproject.com) and click on "Resources."

**LITURGY SCHEDULE****Saturday – December 24 - 4:00PM**

Greeters: TBD  
 Sacristan: TBD  
 Servers: J Frederick, J Torrey, C Wilferth  
 Ushers: M Mayer, K Corsini, D Edwards, M Edwards, M Fragale, G McMIndes, D McMIndes, L O'Neill, J Frederes,  
 J Auslander, M Beggs, J Maxwell, D O'Grady, D Sandvig,  
 D Stanley, A Young  
 Lec/Com: TBD  
 E.M: TBD

**Saturday – December 24 - 4:00PM Downstairs**

Greeters: TBD  
 Sacristan: TBD  
 Servers: NEEDED  
 Ushers: T Ingram, J Flucke, A Flucke, S Gengler, P Healy,  
 R Kneib, D Levell, R Vosters  
 Lec/Com: TBD  
 E.M: TBD

**Saturday – December 24 - 6:00PM**

Greeters: TBD  
 Sacristan: TBD  
 Servers: C Koettker, T Koettker, N Tai  
 Ushers: W Parsons, A Banker, D Geck, D Lisak, D Vater, T Wallace,  
 L Willenbring, J Woodruff, MStuppy, K Stuppy, S Stuppy, M  
 Blanckensee, N Blanckensee, J Reichmuth  
 Lec/Com: TBD  
 E.M: TBD

**Saturday – December 24 - 8:00PM**

Greeters: TBD  
 Sacristan: TBD  
 Servers: G Vap, S Suchma  
 Ushers: D Moorman, J Cutter, K Brox, L Harpenau, R LoBosco,  
 S Malecki, G Merlotti, M Short, S Troester  
 Lec/Com: TBD  
 E.M: TBD

**Saturday – December 24 - 10:00PM**

Greeters: TBD  
 Sacristan: TBD  
 Servers: L Staus  
 Ushers: C Verville, D Schwind, J Pater, T Lenz, J Hogan,  
 L Simons  
 Lec/Com: TBD  
 E.M: TBD

**Sunday – December 25 - 9:00AM**

Greeters: TBD  
 Sacristan: TBD  
 Servers: A Martinez, B Rickert, A Rickert  
 Ushers: S Korte, J Belek, R Denesia, M Goodman, L Henderson,  
 J Rode, J Rottinghaus, H Schafer  
 Lec/Com: TBD  
 E.M: TBD

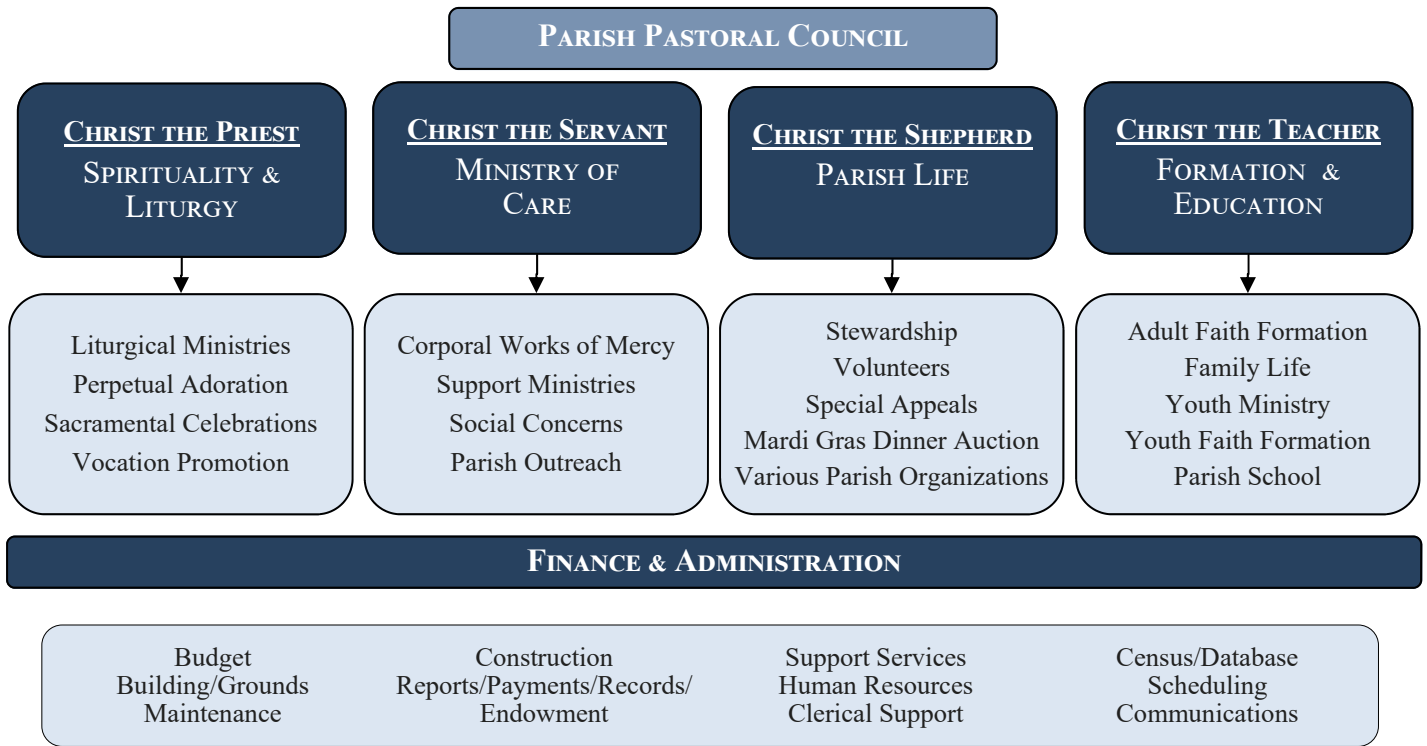
**Sunday – December 25 - 11:00AM**

Greeters: TBD  
 Sacristan: TBD  
 Servers: NEEDED  
 Ushers: C Winger, J Ekedahl, J Mayerle, T Moloney, T Roberts,  
 P Murphy, D Walker,  
 Lec/Com: TBD  
 E.M: TBD

**Counters: Dec 26:** D Healy, B Jones, S Sasenick, B Wilson



# PARISH ORGANIZATIONAL CHART



## PARISH CONTACTS

### PARISH OFFICE

Phone: 913-681-3348 Fax: 913-681-3517  
[ascensionchurch@kcascension.org](mailto:ascensionchurch@kcascension.org)

<b>Pastor</b> ..... 913-681-3348, x137 <b>Parochial Vicar</b> ..... 913-681-3348, x138 <b>Parochial Vicar</b> ..... 913-681-3348, x147 <b>Business Manager</b> ..... 913-681-3348, x135 <b>Music</b> ..... 913-681-3348, x154 <b>Ministry of Care</b> ..... 913-681-3348, x131 <b>Parish Life</b> ..... 913-681-3348, x134 <b>Adult Faith &amp; RCIA</b> ..... 913-681-3348, x139 <b>Adult Faith &amp; Baptisms</b> ..... 913-681-3348, x142 <b>Social Media &amp; Family Life</b> ..... 913-681-3348, x149 <b>Receptionist</b> ..... 913-681-3348, x130 <b>Communications</b> ..... 913-681-3348, x132 <b>Maintenance/Head Custodian</b> ..... 913-681-3348, x145	<b>Monsignor Thomas Tank</b> <a href="mailto:frtom@kcascension.org">frtom@kcascension.org</a> <b>Reverend Regie Saldanha</b> <a href="mailto:firegie@kcascension.org">firegie@kcascension.org</a> <b>Reverend Alessandro Borraccia</b> <a href="mailto:Alessandro.borraccia@gmail.com">Alessandro.borraccia@gmail.com</a> <b>Sharon Weems</b> <a href="mailto:sweems@kcascension.org">sweems@kcascension.org</a> <b>Dorothy Brandwein</b> <a href="mailto:dbrandwein@kcascension.org">dbrandwein@kcascension.org</a> <b>Jean Hinman</b> <a href="mailto:jhinman@kcascension.org">jhinman@kcascension.org</a> <b>Dawnlee Maurer</b> <a href="mailto:dmaurer@kcascension.org">dmaurer@kcascension.org</a> <b>Liz Willman</b> <a href="mailto:lwillman@kcascension.org">lwillman@kcascension.org</a> <b>Denise Greene</b> <a href="mailto:dgreene@kcascension.org">dgreene@kcascension.org</a> <b>Ray Martin</b> <a href="mailto:rmartin@kcascension.org">rmartin@kcascension.org</a> <b>Jan Montalvo</b> <a href="mailto:jmontalvo@kcascension.org">jmontalvo@kcascension.org</a> <b>Maggie Wright</b> <a href="mailto:mwright@kcascension.org">mwright@kcascension.org</a> <b>Virgil Crumpton</b> <a href="mailto:verumpton@kcascension.org">verumpton@kcascension.org</a>
---	--

### ASCENSION CATHOLIC SCHOOL

Phone: 913-851-2531 Fax 913-851-2518

<b>Principal</b> ..... 913-851-2531, x101 <b>Vice Principal</b> ..... 913-851-2531, x106 <b>Administrative Assistant</b> ..... 913-851-2531, x100 <b>Administrative Assistant</b> ..... 913-851-2531, x112	<b>Becky Wright</b> <a href="mailto:bwright@acseagles.org">bwright@acseagles.org</a> <b>Andrew Legler</b> <a href="mailto:alegler@acseagles.org">alegler@acseagles.org</a> <b>Janet Eckert</b> <a href="mailto:jeckert@acseagles.org">jeckert@acseagles.org</a> <b>Molly Johnson</b> <a href="mailto:mjohnson@acseagles.org">mjohnson@acseagles.org</a>
---	--

### YOUTH FAITH FORMATION

Phone: 913-681-7683 Fax: 913-681-7634

<b>Director</b> ..... 913-681-7683, x105 <b>Administrative Assistant</b> ..... 913-681-7683, x103	<b>William O'Leary</b> <a href="mailto:woleary@kcascension.org">woleary@kcascension.org</a> <b>Tricia Baldwin</b> <a href="mailto:tbaldwin@kcascension.org">tbaldwin@kcascension.org</a>
--	---

### YOUTH MINISTRY

<b>8th Grade &amp; High School</b> ..... 913-681-7683, x115 <b>8th Grade &amp; High School</b> ..... 913-681-7683, x104 <b>A2J, 6th &amp; 7th Grade</b> ..... 913-681-7683	<b>Joe Passantino</b> <a href="mailto:findithere@gmail.com">findithere@gmail.com</a> <b>Chelsea Pratt</b> <a href="mailto:findithere@gmail.com">findithere@gmail.com</a> <b>Ashley Burns</b> <a href="mailto:findithere@gmail.com">findithere@gmail.com</a>
---	--

### COUNCIL CHAIRS

<b>Parish Pastoral</b> ..... <b>Finance</b> ..... <b>School Advisory</b> .....	<b>Lori Stevens</b> <a href="mailto:lori_a_stevens@yahoo.com">lori_a_stevens@yahoo.com</a> <b>John Kmetz</b> <a href="mailto:jkmetz@bkd.com">jkmetz@bkd.com</a> <b>Shannon Gomez</b> <a href="mailto:pioprayhope@gmail.com">pioprayhope@gmail.com</a>
--	--

Please go to [kcascension.org](http://kcascension.org) to see a full listing of all our ministries under Get Involved/Ministry Directory/Ministry Guide.

Home for Sale - 1st floor master suite



**15805 Howe St., OP, KS 66224, Mid \$600s**  
 Built 4 yrs ago, this sought-after floor plan is layered with upgrades, gourmet kitchen, plus finish walkout LL. Large, quality home on cul-de-sac in popular BV School nbhd.

**RITA STERRETT**

*Delivering Results*

For more info, please contact parishioners:  
**Rita Sterrett 226-9393 or Bill Fredrickson 909-4492**  
 Keller Williams Partners Realty, Inc.  
 Tour this & more at  
[www.KCHomesForYou.com](http://www.KCHomesForYou.com)

**JEFF THOMPSON**  
 ORTHODONTICS



*A Fresh and Polished Approach to Oral Health*

4851 WEST 134TH STREET  
 LEAWOOD  
 KANSAS 66209-7803

913.681.8300

[WWW.JEFFTHOMPSONORTHO.COM](http://WWW.JEFFTHOMPSONORTHO.COM)

**JEFFREY J. THOMPSON, D.D.S., M.S.**  
 DIPLOMATE AMERICAN BOARD OF ORTHODONTICS

**Harvey & Caldwell, PA**

**Gerald E. 'Bud' Harvey, Jr.**

CPA, CFP

**CERTIFIED PUBLIC ACCOUNTANT**

12980 Metcalf Ave.  
 Suite 305

**(913) 451-4400**

**KAW ROOFING AND SHEET METAL, INC.**

*On Top of Kansas City Since 1923*

COMMERCIAL • INDUSTRIAL • INSTITUTIONAL  
 (913) 371-6100 2105 N. 13th St.

JOHN & STEVE DALY KANSAS CITY, KS 66104

**A FABULOUS FIND**

*Antiques, Home décor, Consignment & more.*  
 12,500 sq. ft. Filled with unique one of a kind items ...something for everyone!

*Come shop the charm of Mission with family & friends. next to Tuesday Morning.*  
 5330 Martway, Mission Kansas  
 913-722-7788



**CHET'S LOCK & KEY**

*Your Key to Physical Security!*

Commercial & Residential Locksmithing Access Control

**913-381-5565**

Call for FREE Estimates visit: [www.chetslock.com](http://www.chetslock.com)



**A Full-Service Needlepoint Shop**

providing canvas, fibers, custom canvas design and finishing

105 E Gregory

Kansas City, MO 64114

816-599-7331

[www.kcneedlepoint.com](http://www.kcneedlepoint.com)

*Gratitude*

**CHUCK JANSEN**

chuckjansen@kw.com  
 913-710-2597



**SUSANNA DICKERSON**  
 susannadickerson@kw.com  
 303-520-7904



**MEYER MUSIC**

Your Total Music Store

Private Lessons on all Musical Instruments

Grand Piano & Console Pianos Available Band Instrument Rental

Mike Meyer, Mgr. 119th & 69 Hwy., Overland Park 491-6636



Parishioner



**Nancy Davidson**  
 Proven Realtor & Professional Home Stager

Perfect Choice For You!

913-952-9813 Mobile

**Twyla Rist & Associates**

Kansas City Business Journal

Top 25 Group for 2015

nancydavidson@reeceandnichols.com

**KRIM**

**Chiropractic & Acupuncture**

Dr. John W. Krim III, D.C.

O: 913-685-0022 C: 913-638-9669

Mon. & Wed. 8-5 - Tues. 9-6

Th. 8:30-5:30 - Fri. 8-12

12631 Antioch Rd., OPK 66213

krimchiro@gmail.com



**MICAELA FLICK LMSW**

Be YOU, Bravely

*Individual, Family & Couples Counseling*

913-488-8841

10965 Granada Lane, Suite 103, Overland Park, KS 66211



Specialists in Sports and Orthopedic Rehabilitation

**Dan Lorenz**

Physical Therapist  
 Parishioner

913-904-1128 • [www.ssorkc.com](http://www.ssorkc.com)

**MIDWAY AUTO PARTS**

\*Recycled Parts  
 \*Aftermarket Parts  
 \*OEM Parts  
 \* Self Service Parts  
 \* Vehicle Sales  
 \* Vehicle Bids

[www.midwayauto.com](http://www.midwayauto.com)

**(816) 241-0500**



Running or Not WE want your Car!

"One Call for all your Automotive Needs"



**Ong & Company**  
 certified public accountants

**Richard H. Ong, CPA**

Principal

Corporate Woods BLDG 32

913-451-0056

Dick@OngAndCompany.com

[www.OngAndCompany.com](http://www.OngAndCompany.com)

**JULIE STOLL, CPCU, CLU, ChFC**

Ascension Parishioner



**State Farm™**

Providing Insurance

+ Financial Services

**913-722-6200**

Fax 913-677-2588

[www.juliestoll.net](http://www.juliestoll.net)

email: julie@juliestoll.net



Linda Hanson

**ENTERPRISE BANK & TRUST**  
 TALENT • STRENGTH • PASSION

Smart solutions for all of your business banking needs.



Paul Tymosko  
 Parishioner

12695 Metcalf Ave. ■ Overland Park, KS 66213

913.663.5525

[www.enterprisebank.com](http://www.enterprisebank.com)

Member FDIC



Customizable plans for every need.

**Bill Pikus**

bpikus@farmersagent.com  
 13208 CRAIG ST • OVERLAND PARK, KS 66213



**FARMERS INSURANCE**

Lets talk insurance...I'm just around the corner for your convenience.

Call 913-338-3300 today for Auto, Home, Life and Business.



Janitorial Supply Company

A TOP RESOURCE FOR CLIENTS WHO WANT SUPERIOR PRODUCTS & OUTSTANDING SERVICE

Products for high density office structures to large industrial and government facilities, schools, hospitals, nursing facilities to local retailers and more!

913-322-9452 [www.cleansolutionstore.com](http://www.cleansolutionstore.com)

**The Flower Girl**

FLOWERS FOR WEDDINGS & SPECIAL EVENTS

Erica Smail-Carlisle AIFD

The Knot "Best of Weddings" Winner 2011-2016

913.972.0752 [kcflowergirl@gmail.com](mailto:kcflowergirl@gmail.com)

[www.KCFLOWERGIRL.COM](http://www.KCFLOWERGIRL.COM)





**ResetMe**  
EASIER MOVES FOR OLDER ADULTS

913-667-2301  
resetleme.com

**Feeling overwhelmed by an upcoming move?**

We can make your move more manageable and help make your new surroundings quickly feel like home.

- Move coordination
- Packing
- New Floor Layout
- Unpacking
- Downsizing
- Organizing



Co-Owner Peggy Shults, Parishioner



1000 N. Rogers  
127th & I-35

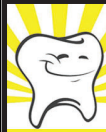
913-782-3636

www.frankanconabonda.com

Did You, Spouse, Parent, Grandparent Serve?



Call to Help Your Veteran Get Their Benefits  
816-222-9090 www.4usvets.com



Emily C. Day, D.D.S.

**Sunny Day**  
Pediatric Dentistry P.A.



913.239.0703

7381 W. 133rd Street Suite 303  
Overland Park, KS 66213

sunnydaykidsmiles.com

Experience the Sunny Day Difference | Accepting New Patients



**John Michael Quinn, M.D.**

**Plastic Reconstructive & Hand Surgery**  
Overland Park, KS 913-492-3443

www.QuinnPlasticSurgery.com



**BASIC HONEST DENTISTRY**

**MARK MORTON DDS**  
119th & Quivira  
451-3400

(10% PARISHIONER DISCOUNT)



Where you can get Great Food and Beverage at a Great Price!!

Open early on Saturdays and Sundays for Breakfast 10AM - 2PM

Overland Park, KS 913-661-9922  
Leawood, KS 913-851-7444  
www.talkofthetowngrill.com  
Parishioner Owned

**LEHNARDT & LEHNARDT LLC**  
ATTORNEYS AND COUNSELORS AT LAW  
Comprehensive Planning for Your Assets, Business and Family

913.948.9670  
lehnardt.com

**BeliefnRelief.com**  
Massage Therapy - convenient south KC location  
By appointment only  
Very reasonable pricing  
Dan Draney - LMT



**THE HALLEY MENGHINI TEAM**  
Helping you make the right move  
**STEPHANIE HALLEY**  
913.244.9642  
**MANDY MENGHINI**  
913.302.5899

A fresh perspective in real estate www.hmsellskc.com Parishioners

"You'll Love Coming Home To A Clean Home"

- Customized Cleaning Schedule
- Written Guarantee of Satisfaction
- Insured, Bonded & Supervised
- Move In - Move Out Cleaning
- Gift Certificates & Bridal Registry

www.mollymaid.com



913-780-9777  
Parishioner



\$20.00 off 1st / Cleaning • \$10.00 off 3rd • New Clients Only!

**ROSE ESTATES**

Assisted Living Community

12700 Antioch Road  
Overland Park, KS 66213

rosestatesalf.com  
(913) 825-9600

Joe Vogliardo  
Nativity Parishioner

INSPIRED BY YOU

**Ryan CONSTRUCTION SYSTEMS INC.**

**PROFESSIONAL ROOFING CONTRACTOR**

Since 1986 - 30 Years & 30,000 Happy Customers

Roofing - Guttering • Room Additions • Masonry • Complete Home Remodeling

913-888-0080 Visit www.rcskc.com

Our Roofers & Construction Specialists put the "Extra" in Extraordinary

Licensed & Insured

**Sunflower**  
Benefits Group

Spending too much on Health Insurance?

The right Insurance SOLUTIONS for you, your family and business.

JUST CALL CONNIE! | 913.568.9277

CONNIE JABARA | www.SunflowerBenefitsGroup.com  
Parishioner



FREE Small Iguana with Purchase of 2 Entrees  
10478 South Ridgeview  
Olathe, KS  
913-310-9003  
www.saltyiguana.net

**KATHY O'GRADY**  
KANSAS CITY REGIONAL HOMES, INC.  
REALTORS®



"Call Kathy and start packing"  
913-568-8472  
kogrady@kcregionalhomes.com



**Green Expectations Landscaping Co., Inc.**

KC's Premier Design/Build Company Since 1991

Landscaping • Patios • Walkways  
Pruning • Mulching • Walls • Drainage Solutions  
Outdoor Kitchens • Fire Pits • Lighting

913-897-8076 www.expectgreen.com

Mention this ad and get a 5% discount on any service  
Parishioner Owned - Tom & Nancy Bunker



**ROCKHURST HIGH SCHOOL**

816-363-2036  
PLACEMENT TEST  
Dec. 10th & Jan. 7th 8am

**MAYHEM IS EXPENSIVE. ALLSTATE IS NOT.**



Scott Lowery  
913-375-9500  
11810 Quivira Rd.  
scottlowery@allstate.com  
allstateagencies.com/a4818



Subject to terms, conditions and availability. Allstate Fire and Casualty Insurance Co. Allstate Indemnity Co. © 2013 Allstate Insurance Co.

117955

www.jspaluch.com

For Ads: J.S. Paluch Co., Inc. 1-855-685-5703

017629 Ascension Church (B)

Sales | Service **Accelerated** In Industry  
Installations **Garage Door Service** 17 Years  
Parts Dept. & Show Room - Call for Free Quotes  
**913-952-4738 • 7871 Mastin, OPK, Kansas**

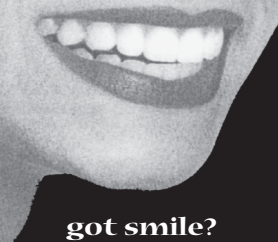
Companion Animal  
• Medicine  
• Surgery  
• Dentistry  
• Laser Therapy  
• Grooming  
• Wellness Plans

**Quivira Crossing**  
Veterinary Clinic  
Dr. Cindy Taylor, Parishioner  
913-647-4141  
135th & Quivira by Price Chopper



**ENSMINGER**  
RETAIL LIQUOR STORE  
(913) 469-9006  
11052 Quivira Rd.  
(College Sq. S/C)  
Judy Ensminger, Owner  
The Place To Go  
When Your Spirits Are Low!  
BEER • CORDIALS • LIQUORS • WINES

**Morrill & Janes Bank**  
ESTABLISHED 1871  
Yesterday, Today and Tomorrow... Your Bank for Life.  
**John J. Geiger**  
President -  
Johnson County Division  
**PARISHIONER**  
913-254-7400  
jgeiger@mjbcommercial.com  
www.MJBTRC.com  
10101 Woodland Rd., Lenexa, KS  
Member FDIC



got smile?  
Robert D. Long, DDS, PA  
11111 Nall Ave., Suite 109  
SE Corner of College & Nall  
(913) 491-3353  
Parishioner  
www.robertdlongdds.com

**Lynn Hagel Smith, D.D.S.**  
Parishioner  
Gentle Family Dentistry  
913-451-6311  
College & Antioch  
www.smithdental.com

We Sell More Homes Than Any Other Realtors in zip code 66213!  
**Rita Dickey & Associates**  
913-266-5470  
Rita Moley Dickey -parishioner  
Dawn Boedeker-parishioner  
Carolyn Poer-parishioner  
Stacy McCullough  
Parishioner www.ritadickey.com




**MOVING?**  
Local or Long Distance  
Contact or Call  
**Darrell Bandel**  
913-954-4844  
dlbandel@fry-wagner.com  
Parishioner  
**FRY WAGNER**  
AN AGENT FOR UNITED

**Better Homes and Gardens**  
REAL ESTATE  
KANSAS CITY HOMES  
Myra Kanatzar  
913-661-2364  
Parishioners  
Mary Kanatzar-Glaser  
913-661-8576



**Trotter & Morton**  
SPENDING \$ INEFFECTIVELY/INEFFICIENTLY?  
and ...How would you know?  
LET TROTTER & MORTON HELP YOU!  
Church of Ascension's Facility Consultants **816-416-8240**

**RONALD CASTOR** L.C.  
CERTIFIED PUBLIC ACCOUNTANT  
Ronald Castor, CPA & K of C Member  
RCASTOR@AAFCOM.COM  
14221 METCALF AVE. No. 200, OVERLAND PARK, KS 66223 PH. 913.469.9113

**Budget Blinds**  
A Style for Every Point of View  
Shutters  
Wood Blinds  
Drapes & More!

Complimentary In-Home Consultation  
913-402-1600  
www.budgetblinds.com  
An independently owned and operated franchise  
239 SE Main  
Lee's Summit, MO 64063

Member FDIC NMLS #244322  
**MERIT BANK**  
NMLS #677400  
**JOHN RODE**, Parishioner  
Mortgage Loan Professional  
913-232-5676  
JohnR@meritbanks.com  
www.meritbanks.com  
10000 COLLEGE BOULEVARD  
OVERLAND PARK, KS 66210

**Erickson Solutions Group** provides total Computer, Network, Helpdesk, and Cloud Services to small and medium size organizations.  
913.648.2510  
www.ericksonsolutionsgroup.com

**Hechler Orthodontics**  
Steven L. Hechler, D.D.S., M.S.  
www.hechler.com  
12800 Metcalf, Ste.1  
Overland Park, KS 66213  
(913) 469-6086

Lynne M. Schopper, D.D.S.  
Jarrett S. Grosdidier, D.D.S.  
**Family Dentistry**  
115th & Nall  
(913) 451-2929  
www.sandfamilydentistry.com • Parishioner



**PEDIATRIC PARTNERS, P.A.**  
Dr. Kristen Stuppy  
Dr. Susan Ratliff  
parishioners  
913-888-4567  
www.pediatricpartnerskc.com  
135th Street and Metcalf

**Freddy's**  
FROZEN CUSTARD & STEAKBURGERS®  
Now Hiring for Daytime Shifts IN OVERLAND PARK!  
FreddysUSA.com

**Better Homes and Gardens**  
KANSAS CITY HOMES  
**JEFF ZANDE** Real Estate Consultant  
call - 913-901-6121  
www.JeffZande.KansasCityHomes.com  
Parishioner



**Acendas**  
MANAGING THE RISK OF TODAY'S TRAVEL  
Perfect Vacations are Created by Professionals  
Call Acendas Travel Today!  
913-384-9999  
www.acendas.com  
5331 Johnson Drive • Mission, KS 66205  
Parishioner Owned

**efg PLANNING**  
FINANCIAL • WEALTH • RETIREMENT  
**Steve F. Mankameyer, CFP**  
Certified Financial Planner  
You need a plan!  
• Retirement, Income & Estate Planning  
• IRA Rollover Specialist  
• Tax Reduction Strategies  
Call (913) 851-2900 for a FREE Consultation!  
www.EFGplanning.com



**PORTER FUNERAL HOMES & CREMATORY**  
8535 Monrovia Lenexa, KS 66215 913-438-6444  
LOCALLY OWNED AND OPERATED SINCE 1902  
1835 Minnesota Ave. Kansas City, KS 66102 913-621-6400  
JOHNSON COUNTY'S ONLY CATHOLIC OWNED FUNERAL HOME

**LAND ESCAPES LLC**  
Landscape • Hardscape  
• Irrigation Systems  
Call Brett 913-638-1308  
www.landescapesop.com  
Sacred Heart Parishioner

**catholicmatch Kansas**  
CatholicMatch.com/myKS  
www.jspaluch.com



**BOB HAMILTON**  
PLUMBING + HEATING + A/C  
Better Call Bob  
(913) 888-4-BOB  
\$10 dollars off with this coupon

Retiring soon? Let's talk.  
**MARTY KREBS**  
Financial Advisor  
6300 West 143rd Street Ste 220  
Overland Park, KS 66223  
913-685-8119  
marty.krebs@edwardjones.com  
**Edward Jones**  
MAKING SENSE OF INVESTING Member SIPC



**LEO MICKELLETTO AGENCY INC.**  
Offering Home, Auto, Life and Long Term Care  
12501 Antioch, Ste. A  
Overland Park, KS 66213  
Parishioner



**AMERICAN FAMILY INSURANCE**  
913-685-9600  
lmickele@amfam.com